



UNIVERSITÀ  
DEGLI STUDI  
DI PALERMO

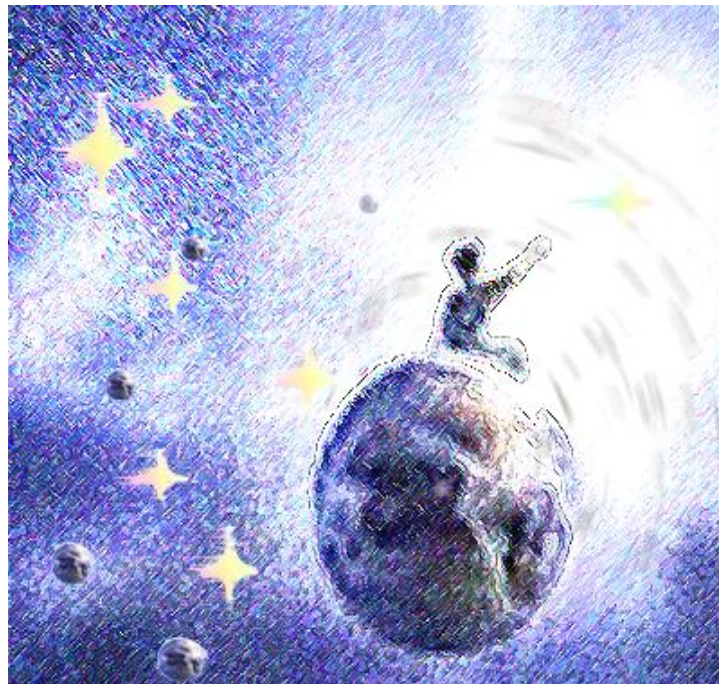
DIPARTIMENTO DI PSICOLOGIA  
Unità di Ricerca in “Psicologia Pediatrica”  
FACOLTA’ DI SCIENZE DELLA  
FORMAZIONE



SIP Provider

1<sup>th</sup> International Congress in Italy  
**The Planet of “Pediatric Psychology”; beyond the Psychology at Pediatrics**

November 25<sup>th</sup> – 26<sup>th</sup> – 27<sup>th</sup>, 2011  
61, Steri Chiaramonte P.zza Marina  
Palermo



***Pediatric Psychology***  
*as a discipline, a perspective,*  
*a professional ability,*  
*or a typology of professional functioning*  
*to **strengthen** children and adolescents*

## INTRODUCTION



*The logical framework guiding the scientific research unit's commitment towards going beyond a Psychology in Paediatrics, has laid the way to highlight some "empirical evidence" and data that have been rigorously gathered. Such data, together with the orientation and direction of the work carried out by the 54<sup>th</sup> Division of the American Psychological Association, have allowed for the hypothesis of the need for a specific competence, an "able to/for" of the psychologist who deals with the organic pathologies of childhood and adolescence.*

*In this sense, the Congress wants to promote a different approach to working on trauma and the possibility of its elaboration; a method which can be defined according to a clinically evolutionary prospect and not in an evolutionary clinical key. In other words, for the Pediatric Psychologist, the focus is the dynamics that guides the development processes between continuity and discontinuity, mechanisms and intentionality, biological elements and the contribution of social learning, automatism and intentionality, etc. An evolutionary dynamics is meant to be referred to which would seem compromised by the pathology, often resulting as dysfunctional to growth and complexity of development; this tendency, however, can be guided by the intervention of a Pediatric Psychologist, towards the promotion of functional resources for getting through the risk and the possible evolutionary black-out induced by the compromises themselves.*

## C.M.E ACCREDITATION PROCEDURE

The workshop sessions of the conference are accredited by the Italian Continuing Medical Educative Credits for a total of 7 C.M.E .

The C.M.E for psychologists, pediatricians and pediatric nurses:

- November 25<sup>th</sup> , workshop session: 4 C.M.E.
- November 26<sup>th</sup> , workshop session: 3 C.M.E.
- All the registered pediatricians will also be issued with 24 C.M.E., participating to the free workshop, scheduled in January 2012 and February 2012 (Palermo edition or Catania/Messina edition). The workshop will deal with the problems related to assessment, parenting, training and when Pediatrician sends the child to Paediatric Psychologist.

## ALL PARTICIPANTS WILL BE ISSUED WITH A CERTIFICATE OF ATTENDANCE

The accreditation procedure is carried out and supervised by "Biomedica s.r.l. – S.I.P. Italian Society of Pediatrics Administrative Secretariat". For further information, please contact us : tel. 02/45498282 - fax 02/45498199, Via Libero Temolo 4, 20126, Milan.

[www.biomedica.net](http://www.biomedica.net)

Our thanks to:

- "A. Borzi travel agency"
- " D.T. S.r.l Soluzioni e Servizi "



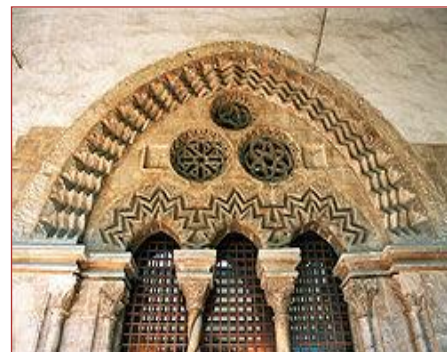
**Steri Chiaromonte** is one of the most historical palace in Palermo.

The building was begun in the early 14th century, and was the residence of the powerful Sicilian lord Manfredi III Chiaramonte. He commissioned the decoration of the *Sala dei Baroni* ("Grand Hall"), with a frescoed wooden ceiling by Cecco di Naro, Simone da Corleone and Pellegrino Darena. From the late 15th century to 1517 it housed the Aragonese-Spanish viceroys of Sicily; later it was home to the Royal Customs and, from 1600 to 1782, the tribunal of Holy Inquisition.

The palace was restored in the 20th century, with the elimination of numerous elements associated with its

role as a jail of the Inquisitions. The palace is now a museum; among the artworks, it houses Renato Guttuso's *Vucciria*.

Today parts of the palace are used as the executive administrative offices of the University of Palermo



**Friday, NOVEMBER 25th**

### **8.30 Registration (press office, placed on the courtyard)**

- "Showcase" young and "old" researchers work (placed on 2<sup>nd</sup> floor)

Coordinator: R. Morales

Participants:

V. Caretti, M. Cavallaro, A. Cioffi, S. Ciulla, C. Consiglio, G. Craparo, C. Crisafi, M. Lepore, N. Ragonese; A.M. Ferraro, F. Pruiti Ciarello, F. Giannone; C.Guarnaccia, M.R. Infurna, F. Giannone; A. Maggio; M. G. Lo Cricchio, A. Lo Coco; M.Marino, A.Cannizzo, C.Favara Scacco, S.Marino, E.Aguglia; G.Maniscalco; A. Schimmenti; V. Schimmenti, I. Petruccelli, L. Iannucci; S. Torrasi; "DI.STU.RI.- F.I.M.P. pediatricians; " A reflexion of nurses about care" and .....

- "Showcase" Research Unit "Pediatric Psychology" work (colonnade, ground floor)

- "Showcase" Ce.S.I.P.P.U.O'. (Interinstitutional Experimental Pediatric Polyvalent University Hospital Center) (colonnade, ground floor)

### **Conference Works**

(sala dei Baroni, placed on 2<sup>nd</sup> floor)

09.20 Opening video "A journey into Pediatric Psychology"



### 9.30 Welcome speeches

#### **The attendance:**

prof. Roberto Lagalla, Chancellor of the University of Palermo  
prof. Giacomo De Leo, Dean of the Faculty of Medicine and Surgery  
prof. Michele Cometa, Dean of the Faculty of Educational Sciences  
prof. Gabriele Profita, Head of the Department of Psychology  
dr. Salvatore Di Rosa, The CEO of “The Joint Hospitals – Villa Sofia-Cervello”  
dr. Massimo Russo, Sicilian Regional Health Councilor  
avv. Andrea Piraino, Sicilian Regional family, social policies, and work Councilor  
dr. Antonio Valenti, Administrative Director of the University of Palermo

*The Italian Master of Pediatrics, internationally renowned*  
*Prof. Roberto Burgio, Emeritus Professor University of Pavia*

Chair: A. Pepi

#### 10.20 Master Class: “ **Pediatric Psychology between History and Future** ”

- M. Roberts: “Historical Perspectives on Pediatric Psychology: The Past is Prologue”
- G.P. Koocher : “The Future Pediatric Psychology: New Interventions and Paradigms”

Chairs: L. Cipolotti , A. Sansone

11.15 Coffee break (*colonnade ground flour*)

#### 11.30 Symposium: “**Between Pediatrics and Pediatric Psychology: Criteria for a possible paradigm for Pediatric Psychology**”

- G. Corsello: Pediatrics: old certainties and new prospects
- G. Perricone: Presentation of the Pediatric Psychology Research Unit and a reflection on Pediatric Psychology

Questions and Answers - Registration on paper

Chairs: E. De Grazia, Fl. De Luca

12.40 Posters will be set out for the afternoon workshop

13.00 –14.00 Break



#### 14.15 - 17.15 Workshop Sessions: “The Pediatric Psychology approach...”

- “ ... **Disability: assessment paths in Pediatric Psychology - Session 1**”  
(sala Casa del Goliardo, vicolo del sant’uffizio)

“A magnifying glass on contributions: theoretical operational aspects to be suggested to pediatric psychology”

Chairs: A. Rizzo, V. Schimmenti

Discussant: A. M. Pepi

Participants:

- M. Alesi
- A. La Greca
- A. Maltese
- A. Ruggiero
- V. Schimmenti, M. Pellerone, A. Collura

“An orientation map to discover paradigms and tools in pediatric psychology”, created during the contributions presentation.

The organizer of the map construction: C. Polizzi

Support for the translation: M. Alesi

- “ ... **Disability: assessment paths in Pediatric Psychology – Session 2**”  
(sala palazzetto neoclassico, placed on the courtyard)

“A magnifying glass on contributions: theoretical operational aspects to be suggested to pediatric psychology”

Chair: S. Mangano

Discussant: M. Oliveri

Participants:

- S. Mangano
- M. Oliveri
- G. Rappo, A. Fratantonio
- C. Saladino, F. Cusimano

“An orientation map to discover paradigms and tools in pediatric psychology”, created during the contributions presentation

The organizer of the map construction: C. Pelaia

Support for the translation: M. Oliveri



**% 14.15 - 17.15 Workshop Sessions: “The Pediatric Psychology approach...”**

- **“ .. Pediatric Psychology in Neonatology : the possible areas of intervention and research”**  
(sala Carapezza, placed on 2<sup>nd</sup> floor)

“A magnifying glass on contributions: theoretical operational aspects to be suggested to pediatric psychology”

Chair: I. Barberi, V. Duca

Discussant: M.G. Fava Vizziello, C.Xibilia

Participants:

- D. Albino, C. Spinto, A. Rizzo
- A. Arco, G. Quartarone, A. Murdaca
- B. De Franchis
- V. Fanos
- B. Gabriele
- G. Giordano
- A. Sansavini

“An orientation map to discover paradigms and tools in pediatric psychology” created during the contributions presentation.

The organizer of the map construction: M.R. Morales

Support for the translation: G. Anzalone

- **“ .. Genetic Syndromes: phases of intervention and contexts for Pediatric Psychology”**  
(chiesa S. Antonio Abate, placed on the courtyard)

“A magnifying glass on contributions: theoretical operational aspects to be suggested to pediatric psychology”

Chair: N. Cassata,

Discussant: F. Monti

Participants:

- M.S. Epifanio, P. Alfano, P. Audino, V. Genna, S. Di Marco, S. La Grutta
- F. Labate
- C. Levorato, M. Roch
- M. Piccione
- L. Ziino

“An orientation map to discover paradigms and tools in Pediatric psychology” created during the contributions presentation.

The organizer of the map construction: M. Ciccia

Support for the translation: A. D’Amico

**% 14.15 - 17.15 Workshop Sessions: “The Pediatric Psychology approach...”**



- **“ .. Pediatric Psychology: in abuse conditions”**  
(sala dei Baroni, placed on 2<sup>nd</sup> floor )

“A magnifying glass on contributions: theoretical operational aspects to be suggested to Pediatric psychology”

Chair: A. Gulino, N. Enea

Discussant: F. Giannone, P. Ferrara

Participants:

- M. L. Benincasa
- F. Giannone
- V. Caretti, N. Ragonese
- Di.Stu.Ri group: R. Malandrino
- P. Ferrara
- R. Militello
- A.R. Verardo

“An orientation map to discover paradigms and tools in Pediatric Psychology” created during the contributions presentation

The organizer of the map construction: A. Carollo

Support for the translation: A. Carollo

- **“ ...Mothers and Parents: the protagonists of the research and intervention orientated by Pediatric Psychology”**  
(sala delle Armi, placed on ground floor)

“A magnifying glass on contributions: theoretical operational aspects to be suggested to Pediatric psychology”

Chair: G. Sulliotti, R.Perricone

Discussant: A.M. Di Vita, R.Larcan

Participants:

- A. Alongi, S. Alongi
- M.P. Guerra, O.Cruz, G. Perricone
- A.M. Di Vita, M.R. D’Anna
- M. Lo Giudice
- M.R. Moro
- S. Nigito, V. Schimmenti
- M. Spagnuolo Lobb

“An orientation map to discover paradigms and tools in Pediatric psychology” created during the contributions presentation

The organizer of the map construction: S. Marotta

Support for the translation: N. Calabrese





17.20 Plenary session: reports by the conveners, chairs, organizers and the workshop participants  
(*sala dei Baroni, placed on 2<sup>nd</sup> floor*)

Participants:

- A. Carollo
- M. Ciccia
- S. Marotta
- M.R. Morales
- C. Pelaia
- C. Polizzi

Coordinated by R. Larcán

18.20 Debate

- Administration of C.M.E. Questionnaire

19.30 Posters will be set out for the tomorrow's workshop (*sala dei Baroni, 2<sup>nd</sup> floor*)

List of workshops:

- **The child / adolescent suffering from cancer: Pediatric Psychology assumes the responsibility for evolutionary compromises and resources - Session 1** (*sala dei Baroni, placed on 2<sup>nd</sup> floor*)
- **The child / adolescent suffering from cancer: Pediatric Psychology assumes the responsibility for evolutionary compromises and resources – Session 2**  
(*sala Carapezza, placed on 2<sup>nd</sup> floor*)
- **Pediatric Psychology as a support in instances of chronic diseases: nephropathy, heart disease, thalassemia, rheumatology, eating disorders**  
(*sala delle Armi, placed on ground floor*)
- **Pediatric Psychology as a support in instances of chronic diseases: diabetes, asthma, eating disorders**  
(*sala palazzetto neoclassico, placed on the courtyard*)
- **From Emergency Room to Surgery, from urgency to emergency.**  
(*Chiesa S. Antonio Abate, placed on the courtyard*)

20.00 Guided tour from “Steri Chiaramonte” to the historical centre of Palermo





**Saturday, NOVEMBER 26<sup>th</sup>**

08.30 – 11.10

**Workshop Sessions: “An integrated approach to health management in Pediatric Oncology, Chronic and Surgical disease”**

- **The child/adolescent suffering from cancer: Pediatric Psychology assumes the responsibility for evolutionary compromises and resources - Session 1**  
(sala dei Baroni, placed on 2<sup>nd</sup> floor)

“A magnifying glass on contributions: theoretical operational aspects to be suggested to pediatric psychology”

Chair: F. Porta

Discussants: M. Santoro, P. D'Angelo

Participants:

- S. Bonichini, M. Tremolada
- A. Guarino, R. Lancellotti
- L. Lima, M. Lemos
- S. Scalone, C. Favara Scacco, S. Marino

“Let's play with these hats to build-up a paradigm to be suggested to Pediatric Psychology”

The organizer : C. Polizzi

Support for the translation: S. Bonichini

- **The child / adolescent suffering from cancer: Pediatric Psychology assumes the responsibility for evolutionary compromises and resources – Session 2**  
(sala Carapezza, placed on 2<sup>nd</sup> floor)

“A magnifying glass on contributions: theoretical operational aspects to be suggested to pediatric psychology”

Chair: A. Pession

Discussant : G. Biondi, S. Marino

Participants:

- C. Cannizzaro
- G. P. Koocher
- C. Favara Scacco, S. Scalone, C. Esposito, A. Militello, G. Baggione
- D. Rizzo

“Let's play with these hats to build-up a paradigm to be suggested to pediatric psychology”

The organizer: S. Marotta

Support for the translation: N. Calabrese

**% Workshop Sessions: “An integrated approach to health management in Pediatric Oncology, Chronic and Surgical disease”**



- **Pediatric Psychology as a support in instances of chronic diseases: nephropathy, heart disease, thalassemia, rheumatology, eating disorders**  
(*sala delle Armi, placed on ground floor*)

“A magnifying glass on contributions: theoretical operational aspects to be suggested to pediatric psychology”

Chair: S. Maringhini, A. Mongiovì  
Discussants: A. Lo Coco, G. Masera  
Participants:

- R. Barcellona
- A. D’Amico
- Fr. De Luca, G. Perricone, A. Privitera, C. Polizzi, F. Rubino
- C. Lo Pinto, L. Pitrolo, E. Giudice
- S. Maringhini, A. Carollo
- T. Scrimali

“Let’s play with these hats to build-up a paradigm to be suggested to pediatric psychology”

The organizer : A. Carollo  
Support for the translation: A. D’Amico

- **Pediatric Psychology as a support in instances of chronic diseases: diabetes, asthma, eating disorders**  
(*sala palazzetto neoclassico, placed on the courtyard*)

“A magnifying glass on contributions: theoretical operational aspects to be suggested to pediatric psychology”

Chair : A. Lo Cascio, V. Provenzano  
Discussant : S. La Grutta, M. Noto  
Participants:

- O. Cruz
- Fl. De Luca, M. Pecoraro
- A. La Greca
- G. Lo Coco
- U. Pace
- C. Salvo

“Let’s play with these hats to build-up a paradigm to be suggested to pediatric psychology”

The organizer: M.R. Morales  
Support for the translation: G. Anzalone



- **From Emergency Room to Surgery, from urgency to emergency.**  
(Chiesa S. Antonio Abate, placed on the courtyard)

“A magnifying glass on contributions: theoretical operational aspects to be suggested to pediatric psychology”

Chair: G. Li Voti, C. Zappulla

Discussant: E. De Grazia, F. Cuzzocrea

Participants:

- L. Barros
- M. Cimador
- P. Curreri
- N. Salviato, C. Dolcemascolo, I. Campisi, R. Staiti, A. Traina
- A. Sansone, M. Giorlando,

“Let’s play with these hats to build-up a paradigm to be suggested to pediatric psychology”

The organizer: C. Pelaia

Support for the translation: M. Cimador

– Administration of C.M.E. Questionnaire

11.10 Break

11.30-12.50 **Round table discussions: “Health, Community, Developmental Process and Pediatric Psychology: what is their connection?”**  
(sala dei Baroni, placed on 2<sup>nd</sup> floor)

Participants: F. Carugati, G. Lo Iacono, G.P. Koocher, C. Polizzi, A. Ruggiero

Coordinators: A. Fischer, G. Lavanco

Support for the translation: N.Calabrese, G.Anzalone

12.50 Questions and Answers. Debate and/or Registration on paper.

14.00 Break

15.00-16.20 **Symposium: the relationship with A.I.E.O.P. Association; opening presentation of results and perspectives**  
(sala dei Baroni, placed on 2<sup>nd</sup> floor)

- F. Porta : Interdisciplinary structure and organization of the association
  - A. Pession: Future perspectives for research and intervention in the dialogue with the Pediatric Psychology
  - M.G. Fava Vizziello: Diagnosys disclosure: When the parents realize that their child is going to die.
- Chair: F. Di Maria, G. Masera



16.30-17.30 **Expo space: approaches, directions, methods and techniques**  
(sala dei Baroni, placed on 2<sup>nd</sup> floor)

- The organization and the epistemological area: G. Perricone, A. Faucetta
- Medical Area: C. Polizzi, J. Caldas Luizeiro, G.Tocco
- Risk Area: A. Bono, F. Maniscalco
- Development Area: C. Lo Bue, E. Marino
- Training and internship area: T. Nuara, C. Mascolino

Interviewers : A. M. Amitrano, C. Cannizzaro, A. Dino, R. Larcan, P. Lendinara  
Chair : C. Licata  
Support for the translation: G.Anzalone

17.40–19.30 **Talk show : Training hypothesis of a Pediatric Psychologist and of a Pediatrician; the transverse aspects and different factors**  
(sala dei Baroni, placed on 2<sup>nd</sup> floor)  
... the Question Time of a journalist ...

Chairs: Fl. De Luca, Fr. De Luca

Participants: F. Carugati, A. Gulino, S. Marotta, F. Pace, M. Roberts, G. Venza

...in the first row of seats: V. Campo, A. Carollo, A. D'Amico, M.Lo Giudice, G. Lo Iacono, C.Polizzi, and still the words of .....

Support for the translation: A. D'Amico

21.30 Social Dinner at Villa Niscemi, Piazza Niscemi, 1, 90146 Palermo





**Sunday, NOVEMBER 27<sup>th</sup>**

**The international networks for research, intervention and training in Pediatric Psychology**

**8.30-10.00 Symposium: Working networks “for” and “across” Pediatric Psychology**  
*(sala dei Baroni, placed on 2<sup>nd</sup> floor)*

Chairs: F. Carugati, A. Fisher

- R. Lagalla (Chancellor of the University of Palermo): “The international relationship amidst obligation and possibility/needs and desires within the University”
- G. Corsello ( Vice-President of the Italian Society of Pediatrics): “The Italian Society of Pediatrics together with Pediatric Psychology, common paths of research and intervention”
- P. Bozzaro (President of the Order of Psychologists- Sicilian section): “Territories, Professional Associations and Universities: what networks are needed for pediatric psychology?”
- G. P. Koocher (President of A.P.A. Division 54<sup>a</sup> ): “Hypothesis for a framework of agreements between A.P.A Division 54 and the Italian Universities regarding both research and intervention”
- A. Lo Coco (Convener/Chair of AIP – “Development Department”): International development of Pediatric Psychology within A.I.P
- G. Perricone (Coordinator of Pediatric Psychology Research Unit, Department of Psychology, University of Palermo): “New prospects for the launch of Pediatric Psychology”

Support for the translation: N.Calabrese, G.Anzalone

**Groups:** 10.00 – 12.00



## **Workshops with the aim of creating networks**

### **SUN PACKAGE**

*(sala Carapezza, 2<sup>nd</sup> floor)*

- Institutional collaboration
- Outline of Agreements
- ATS Funding procedures

### **Convener/Chair:**

L. Borsellino

The General Manager for the Observation Department of Health for the Sicilian Region

D. Faraoni

Administrative Director of “The Joint hospitals – Villa Sofia-Cervello”, Palermo

R. Greco

The General Manager for the Observation Department of Family, Social Policies and Work for the Sicilian Region

G. Lentini

President of “A.S.L.T.I.” Onlus (Sicilian Association for the Battle Against Childhood Tumors and Leukemia)

**Speakers:** I. Barberi, V. Caminita, G. Corsello, O. Cruz, F. Cuzzocrea, M. Di Blasi, A. Fischer, S. Forcieri, M.I. Habicht, G.P. Koocher, A. Lo Coco, M. Lo Giudice, M. Noto, F. Porta, S. Richiusa, A. Rizzo, A. Serafini

**Support for the translation:** M.I. Habicht





**SIRIO PACKAGE**  
(*sala dei Baroni, 2<sup>nd</sup> floor*)

Research projects and relative publishing contributions

*Convener/Chair:*

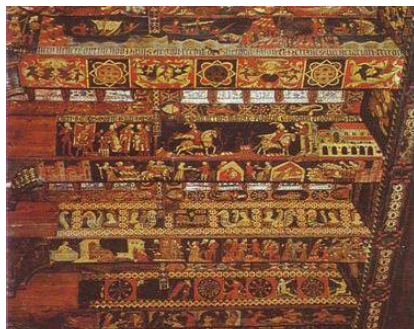
P.M. Leone  
Delegate of the  
Rector for Research  
University of Palermo

P. Assennato  
President of International Relations Committee  
University of Palermo

S. La Rosa  
Head of "I.S.I.D.A." (Superior Institut for Managers and Business Leaders)

**Speakers:** I. Angeli, F. Carugati, A. D'Amico, Fl. De Luca, Fr. De Luca, M. Jankovich, R. Larcán, D. Lipari, M. Lemos, S. Maringhini, S. Marotta, A. M. Moro, A. Pepi, A. Pession, G. Piazza, C. Polizzi, A. Ruggiero, T. Scrimali, L. Tropea, P. Valenti

**Support for the translation:** A. D'Amico







**URSA MAJOR PACKAGE**  
(*sala delle Armi, groundfloor*)

Training for Psychologists: international planning

*Convener/Chair:*

G. De Leo  
Dean of the Faculty of Medicine and Surgery  
University of Palermo

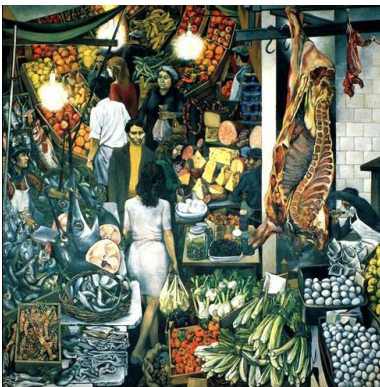
M. Cometa  
Dean of the Faculty of Education Sciences  
University of Palermo

A. Russo  
The General Manager  
Department of Educational and Training for the Sicilian Region

A. Porto  
Head of "F.I.M.P. (Italian Federation of Pediatricians) – Sicily

**Speakers:** M. Averna, R. Barcellona, L. Barros, G. Biondi, V. Campo, G. Creminisi, B. De Franchis, G. Filippazzo, D. Fuso, A. Giostra, A. Gulino, A. La Greca, L. Lima, A. Lo Cascio, G. Lo Iacono, G. Masera, G. Perricone, M. Santoro, M. Spagnuolo Lobb, M. Roberts, S. Torrasi

**Support for the translation:** M. Spagnuolo Lobb





12,10 **Plenary session:** reports by the Convener/Chairs and the workshop participants Coordinated by  
M. Oliveri, S. Forcieri

h 13,15 **Conclusions:** “Paradigms and constructs derived from the conference’s works and from guidelines of self-organized session of AIP Congress 20.09.2011– (Section of Psychology of Development and Education) ” :  
A. Fisher, G. Perricone  
(sala dei Baroni, placed on 2<sup>nd</sup> floor)

... and now from the Congress to Territory “Christmas sounds in Pediatrics” Joint hospitals Villa Sofia- V. Cervello”

#### Post conference

#### “A SCIENTIFIC AGREEMENT”

h 15.30 **Working group :** Forms of Italian Association of “Pediatric Psychology”  
(sala Carapezza, placed on 2<sup>nd</sup> floor)

Opening speeches :

- V. Caretti
- M. Jankovic

Speaker for the proposition of institution: G. Perricone

Coordinators: M. Cardaci, F. Damiani



## LIST OF THE SPEAKERS

**AGUGLIA EUGENIO**, A.O.U. Policlinico “G. Rodolico” – Vittorio Emanuele II, Catania  
**ALONGI ANGELO**, Pediatra, “F.I.M.P.”- Palermo  
**ALONGI ALESSIA**, Laureanda in Scienze e Tecniche Psicologiche, Università degli Studi, Palermo  
**ALBINO DONATELLA**, A.S.P.- Palermo  
**ALESÌ MARIANNA**, Università degli Studi di Palermo  
**ALFANO PIETRO**, Dottore di ricerca in Psicologia, Università degli Studi di Palermo  
**AMITRANO ANNA MARIA** Università degli Studi di Palermo  
**ANGELI ILARIA**, Casa editrice “Franco Angeli Edizioni”, Milano  
**ARCO ALESSANDRO**, Università degli Studi di Messina  
**ASSENATO PASQUALE** Università degli Studi di Palermo  
**AUDINO PALMA** Dottore di Ricerca in Psicologia, Università degli Studi di Palermo  
**AVERNA MARIA**, Università degli studi di Palermo  
**BARBERI IGNAZIO** Università degli Studi di Messina  
**BARCELLONA ROBERTO**, P.O. Ospedale “Giovanni Paolo II”, Sciacca (AG)  
**BARROS MARIA LUISA**, University of Lisbona., Portugal  
**BENINCASA MARIA LUISA** , A.S.P. - Palermo  
**BIONDI GIANNI**, Psicologo, Roma  
**BONICHINI SABRINA**, Università Degli Studi, Padova  
**BONO ALESSANDRA**, Unità di Ricerca in Psicologia Pediatrica, Università degli Studi di Palermo  
**BORSELLINO LUCIA**, Dipartimento Attività Sanitarie e Osservatorio Epidemiologico, Assessorato della Salute, Regione Sicilia  
**BOZZARO PAOLO**, Ordine degli Psicologi – Regione Sicilia  
**BURGIO ROBERTO**, Università degli Studi, Pavia  
**CALDAS LUZIERO JANIO** Unità di Ricerca in Psicologia Pediatrica, Università degli Studi di Palermo  
**CAMPO VALERIA**, Istituto di Gestalt HCC- Italy  
**CAMINITA VALERIA**, Azienda Ospedaliera “Ospedali Riuniti Villa Sofia – Cervello” , Palermo  
**CAMPISI ILDEGARDA**, Istituto Nazionale Tumori Regina Elena-IFO, Roma  
**CANNIZZARO CARLA**, Università degli Studi di Palermo  
**CANNIZZO ALDA BEATRICE**, Tecnico della riabilitazione, Catania  
**CARDACI MAURIZIO**, Università degli Studi di Palermo  
**CARETTI VINCENZO**, Università degli Studi di Palermo  
**CAROLLO ANTONIO**, Unità di Ricerca in “Psicologia Pediatrica”, Università degli Studi di Palermo  
**CARUGATI FELICE**, Università degli Studi di Bologna  
**CASSATA NICOLA**, Azienda Ospedaliera “Ospedali Riuniti Villa Sofia- Cervello”, Palermo  
**CICCIA MARCELLA**, Azienda Ospedaliera “Ospedali Riuniti Villa Sofia – Cervello”, Palermo  
**CIMADOR MARCELLO**, Università degli Studi di Palermo  
**CIPOLOTTI LISA**, Università degli Studi di Palermo  
**COLLURA ADRIANA**, Università degli Studi “Kore” di Enna



**COMETA MICHELE**, Università degli Studi di Palermo  
**CORSELLO GIOVANNI**, Università degli Studi di Palermo  
**CREMINISI GIUSEPPE**, “Fenice” Cooperativa sociale, Palermo  
**CRUZ ORLANDA**, University of Porto, Portugal  
**CURRERI PINETTA**, Anestesista Pediatra, Sciacca (Ag)  
**CUSIMANO FRANCESCA**, Assistente sociale, Palermo  
**CUZZOCREA FRANCESCA**, Università degli Studi di Messina  
**DAMIANI FABIO**, A.S.P. - Palermo  
**D’AMICO ANTONELLA**, Università Degli Studi di Palermo  
**D’ANGELO PAOLO**, A.R.N.A.S. Ospedale “G. Di Cristina”, Palermo  
**D’ANNA MARIA ROSA**, Ospedale Generale Di Zona Buccheri La Ferla Fatebenefratelli, Palermo  
**DE FRANCHIS BARBARA**, Ospedale Generale Di Zona Buccheri La Ferla Fatebenefratelli, Palermo  
**DE GRAZIA ENRICO**, Università degli Studi di Palermo  
**DE LEO GIACOMO**, Università degli Studi di Palermo  
**DE LUCA FILIPPO**, Università degli Studi di Messina  
**DE LUCA FRANCESCO**, Ospedale “Ferrarotto”, Azienda Ospedialiero-Universitaria Policlinico-Vittorio Emanuele, Catania  
**DI BLASI MARIE**, Università degli Studi di Palermo  
**DI MARIA FRANCO**, Università degli Studi di Palermo  
**DINO ALESSANDRA**, Università degli Studi di Palermo  
**DI ROSA SALVATORE**, Azienda Ospedaliera “Ospedali Riuniti Villa Sofia Cervello”, Palermo  
**DI VITA ANGELA MARIA**, Università degli Studi di Palermo  
**DOLCEMASCOLO CECILIA**, Istituto italiano di psicanalisi di gruppo, Palermo  
**DUCA VINCENZO**, Azienda Ospedaliera “Ospedali Riuniti Villa Sofia Cervello”, Palermo  
**ENEA NICOLA**, Azienda Ospedaliera “Ospedali Riuniti Villa Sofia – Cervello”, Palermo  
**EPIFANIO MARIA STELLA**, Università degli Studi di Palermo  
**FANOS VASSILIOS**, Università degli Studi di Cagliari  
**FARAONI DANIELA**, Azienda Ospedaliera “Ospedali Riuniti Villa Sofia – Cervello”, Palermo.  
**FAUCETTA ANNA**, Unità di Ricerca in Psicologia Pediatrica, Università degli Studi di Palermo  
**FAVA VIZZIELLO MARIA GRAZIA**, Università degli Studi di Padova  
**FAVARA SCACCO CINZIA**, A.O.U. Policlinico–Vittorio EmanueleII, Catania  
**FERRARA PIETRO**, Università Cattolica del Sacro Cuore di Milano  
**FILIPPAZZO GABRIELLA**, Azienda Ospedaliera “Ospedali Riuniti Villa Sofia – Cervello”, Palermo  
**FISCHER ALBERTO**, P.O. Santa Marta e Santa Venera, Acireale (CT)  
**FORCIERI SERGIO**, Comune di Palermo.  
**FRATANTONIO ANNA**, Gruppo di lavoro, Dipartimento di Psicologia, Università degli Studi, Palermo  
**FUSO DANIELA**, Scuola media – Policlinico “Gemelli” Roma  
**GABRIELE BRUNA**, Azienda Ospedaliera Universitario Policlinico. “P. Giaccone” Palermo  
**GENNA VITALBA**, Psicologa, Palermo  
**GIANNONE FRANCESCA**, Università degli Studi di Palermo



**GIORDANO GIUSEPPE**, Azienda Ospedaliera “Ospedali Riuniti Villa Sofia – Cervello”, Palermo

**GIORLANDO MARIA**, Azienda Ospedaliera Universitario Policlinico. “P. Giaccone” Palermo

**GIOSTRA ANDREA**, “Fenice” Cooperativa sociale, Palermo

**GIUDICE EMANUELA**, Psicologa, Palermo

**GRECO ROSOLINO**, Assessorato della Famiglia delle Politiche Sociali e del Lavoro, Regione Siciliana

**GUARINO ANGELA**, A.S.L., Roma

**GULINO ANTONIO**, Pediatria di Famiglia, *Paidòs*, Catania

**HABICHT MARIA ISABELLA**, Esperta in network internazionali

**IANNUCCI LAURA**, Centro di Psicologia Giuridica, Italia

**JANKOVIC MOMCILIO**, Ospedale San Gerardo, Monza

**KOOCHER GERALD PAUL**, “Simmons College”, Boston; Society of Pediatric Psychology (Division 54 of A.P.A.), U.S.A.

**LABATE FRANCESCO**, Azienda Ospedaliera “Ospedali Riuniti Villa Sofia – Cervello”, Palermo

**LA GRECA ANNETTE M.**, University of Miami, Society of Pediatric Psychology (Division 54 of A.P.A.), U.S.A.

**LA GRUTTA SABINA**, Università degli Studi di Palermo

**LAGALLA ROBERTO**, Università degli Studi di Palermo

**LA GENGA ANTONELLA**, “I.E.D.P.E”-Comitato locale di Palermo

**LANCELLOTTI RICCARDO**, Università degli Studi “La Sapienza”, Roma

**LARCAN ROSALBA**, Università degli Studi di Messina.

**LA ROSA SALVATORE**, “Istituto Superiore per gli Imprenditori e Dirigenti d’Azienda”, Palermo

**LAVANCO GIOACCHINO**, Università degli Studi di Palermo.

**LEMONS MARINA**, University of Porto, Portugal

**LENDINARA PATRIZIA**, Università degli Studi di Palermo

**LENTINI GIUSEPPE**, A.S.L.T.I. – Onlus, Palermo

**LEONE MAURIZIO**, Università degli Studi di Palermo.

**LEVORATO CHIARA**, Università degli Studi di Padova

**LICATA CALOGERO** Università degli Studi di Palermo

**LIMA LIGIA**, Escola Superior de Enfermagem do Porto-Oporto Nursing School, Portugal

**LIPARI DANIELA**, Istituto di Gestalt HCC- Italy

**LI VOTI GIUSEPPE**, Università degli Studi di Palermo

**LIPARI DANIELA**, Istituto di Gestalt HCC- Italy

**LO BUE CINZIA**, Unità di Ricerca in Psicologia Pediatrica, Università degli Studi di Palermo

**LO CASCIO ANTONINA**, Pediatra, “Di.Stu.Ri”, “F.I.M.P.- Palermo” .

**LO COCO ALIDA**, Università degli Studi di Palermo.

**LO COCO GIANLUCA**, Università degli Studi di Palermo

**LO GIUDICE MILENA**, Pediatra, “Di.Stu.Ri”, “F.I.M.P.”, Palermo

**LO IACONO GIANVERA**, Pediatra di Famiglia, Palermo

**LO PINTO CARMELA**, Azienda Ospedaliera “Ospedali Riuniti Villa Sofia – Cervello”, Palermo

**MAGGIO AURELIO**, Azienda Ospedaliera “Ospedali Riuniti Villa Sofia – Cervello”, Palermo.

**MALANDRINO RAFFAELLA**, Pediatra, “Di.Stu.Ri”, “F.I.M.P.- Palermo



**MALTESE AGATA**, Università degli Studi di Palermo  
**MANGANO SALVATORE**, Università degli Studi di Palermo  
**MANISCALCO FLORIANA**, Unità di Ricerca in Psicologia Pediatrica, Università degli Studi di Palermo  
**MANISCALCO GISA**, Psicoterapeuta, Palermo  
**MARINGHINI SILVIO**, Azienda Ospedaliera di Rilievo Nazionale e di Alta Specializzazione, “Civico/ G. Di Cristina,/Benfratelli”, Palermo  
**MARINO ELISA**, Psicologa, Palermo  
**MARINO MONICA**, Medico in formazione c/o AOU Policlinico Vittorio Emanuele II, Presidio “Gaspere Rodolico” Clinica Psichiatrica, Catania .  
**MARINO SANTO**, Università degli Studi di Catania  
**MAROTTA SUSANNA**, Istituto di Gestalt HCC- Italy  
**MASCOLINO CLAUDIA**, Unità di Ricerca in Psicologia Pediatrica, Università degli Studi di Palermo  
**MASERA GIUSEPPE**, Ospedale San Gerardo, Monza.  
**MILITELLO ROSANNA**, Istituto di Gestalt HCC- Italy  
**MONGIOVI’ ANTONINO**, Azienda Ospedaliera “Ospedali Riuniti Villa Sofia – Cervello”, Palermo.  
**MONTI FIORELLA**, Università degli Studi, Bologna  
**MORALES MARIA REGINA**, Università degli Studi di Palermo  
**MORO MARIE ROSE**, Università “Paris Descartes”, France  
**MURDACA ANNA**, Università degli Studi di Messina  
**NIGITO SIMONA**, dottoranda, Università degli Studi “La Sapienza” di Roma  
**NOTO MATTEO**, Pediatra, Palermo  
**NUARA TIZIANA** Psicologa, Palermo  
**OLIVERI MASSIMO**, Università degli Studi di Palermo  
**PACE FRANCESCO**, Università degli Studi di Palermo  
**PACE UGO**, Università degli Studi “Kore” di Enna  
**PECORARO MONICA**, Università degli Studi di Messina  
**PELLERONE MONICA**, Università degli Studi “Kore” di Enna  
**PEPI ANNA MARIA**, Università Degli Studi di Palermo  
**PERRICONE GIOVANNA**, Università degli Studi di Palermo  
**PERRICONE ROBERTO**, Azienda Ospedaliera “Ospedali Riuniti Villa Sofia – Cervello”, Palermo.  
**PESSION ANDREA**, Università degli Studi di Bologna; A.I.E.O.P.  
**PETRUCCELLI IRENE**, Università degli Studi “Kore” di Enna  
**PIAZZA GIUSEPPE**, Università degli Studi di Palermo  
**PICCIONE MARIA**, Università degli Studi di Palermo  
**PIRAINO ANDREA**, Assessore regionale della famiglia, delle politiche sociali, Regione Sicilia  
**PITROLO LORELLA** , Azienda Ospedaliera “Ospedali Riuniti Villa Sofia – Cervello” , Palermo  
**POLIZZI CONCETTA** Università degli Studi di Palermo  
**PORTA FULVIO** Ospedale dei Bambini A.O. Spedali Civili, Brescia; A.I.E.O.P.  
**PORTO ADOLFO**, (F.I.M.P.) Federazione Italiana Medici Pediatrici Regione Sicilia



**PRIVITERA AGATA.** , Ospedale “Ferrarotto”, Azienda Ospedaliero-Universitaria Policlinico-Vittorio Emanuele, Catania

**PROFITA GABRIELE**, Università degli Studi di Palermo

**PROVENZANO VINCENZO**, A.S.P. - Palermo

**QUARTARONE GIUSEPPINA**,Università degli Studi di Messina

**RAGONESE NICOLETTA**, Psicologa, Palermo

**RAPPO GAETANO**, Università degli Studi di Palermo

**RICHIUSA SAVINO**, Assessorato della Famiglia delle politiche Sociali e del Lavoro, Regione Sicilia

**RIZZO ANGELO**, Presidio Ospedaliero “G.F. Ingrassia”, A.S.P. Palermo

**RIZZO DANIELA**, Policlinico Universitario “A. Gemelli”, Roma

**ROBERTS MICHAEL C.**, University of Kansas, Society of Pediatric Psychology (Division 54 of A.P.A.), U.S.A.

**ROCH MAJA**, Università degli Studi di Padova.

**RUBINO FABRIZIA**, Psicologa, Palermo

**RUGGIERO ANTONIO**, Policlinico Universitario “A. Gemelli”, Roma

**RUSSO MASSIMO**, Assessore regionale alla Sanità, Regione Sicilia

**RUSSO ALESSANDRA**, Dipartimento Formazione Assessorato della Formazione e Lavoro Regione Sicilia

**SALADINO CATERINA**, Neuropsichiatria, Palermo

**SALVIATO NICOLETTA**, Azienda Ospedaliera di Rilievo Nazionale e di Alta Specializzazione, “Civico/ G. Di Cristina,/Benfratelli”, Palermo

**SALVO CATERINA**, Azienda Ospedaliera “Ospedali Riuniti Villa Sofia –Cervello”, P.O. Casa del Sole , Palermo

**SANSAVINI ALESSANDRA** Università degli Studi di Bologna

**SANSONE AMBROGIO** Università degli Studi di Palermo

**SANTORO MASSIMO**, A.S.P. , Palermo

**SCALONE S.**, A.O.U. Policlinico–Vittorio Emanuele, Catania

**SCHIMMENTI ADRIANO**, Università degli Studi “Kore” di Enna

**SCHIMMENTI VALERIA**, Università degli Studi “Kore” di Enna

**SCRIMALI TULLIO**, Scuola di Specializzazione in Psicoterapia Cognitiva- Complessa “Aleteia”, Enna

**SERAFINI ANTONINO**, Università degli Studi di Palermo

**SPAGNUOLO LOBB MARGHERITA**, Scuola di Specializzazione in Psicoterapia - Istituto di Gestalt HCC – Italy

**SPINTO CONCETTA**, Presidio Ospedaliero “G. F. Ingrassia”, A.S.P. Palermo

**STAITI ROSALBA**, Istituto Nazionale dei Tumori di Milano

**SULLIOTTI GIORGIO**, Azienda Ospedaliera “Ospedali Riuniti Villa Sofia- Cervello”, Palermo

**TOCCO GIADA**, Psicologa, Palermo

**TORRASI STEFANIA** , Psicoterapeuta, Palermo

**TRAINA ADELE**, Istituto Nazionale dei Tumori di Milano

**TREMOLADA MARTA**, Università degli Studi di Padova

**TROPEA LUCIANO**, Università degli Studi di Palermo

**VALENTI ANTONIO**, Università degli Studi di Palermo

**VALENTI PATRIZIA**, Università degli Studi di Palermo

**VENZA GAETANO**, Università degli Studi di Palermo





**VERARDO ANNA RITA**, “Centro Ricerche e Studi in Psicotraumatologia”, Roma

**ZAPPULLA CARLA**, Università degli Studi di Palermo

**ZIINO LEA**, Azienda Ospedaliera “Ospedali Riuniti Villa Sofia – Cervello”, Palermo

**XIBILIA CONCETTA**, Azienda Ospedaliera per l’ emergenza “Cannizzaro”, Catania

## THE LIST OF ABSTRACT OF WORKSHOP SESSIONS



Friday, NOVEMBER 25<sup>th</sup>

Workshop Sessions: "The Pediatric Psychology approach..."

- D. Albino, "The infant in T.I.N. the parents and the relationship with the child Hospitalied", Palermo
- M. Alesi, C. Pavone, "The whole child approach in subjects with mental retardation", Palermo
- A. Alongi, S. Alongi "The family pediatrician's role in preventing impaired parent-child relationships: opportunities for early recognition of dysfunctional family interaction patterns in primary pediatric practice. An Italian experience", Palermo
- A. Arco, G. Quartarone, A. Murdaca, "The psycho-pedagogical skills of health workers for the humanization of care in Intensive Care Unit", Messina
- M. L. Benincasa, "The adverse childhood experiences and their influence in the development processes", Palermo
- V. Caretti, N. Ragonese " The assessment of post-partum depression with the PDSS ", Palermo
- M.R. D'Anna, A.M. Di Vita, "Contexts of high-risk pregnancy and parental representations", Palermo
- B. De Franchis, V. Cavarretta, " Training in the NICU: between organizational and institutional dimension "Palermo
- Di.Stu.Ri group: R. Malandrino, *Create Network: Proposition operational tools for the family pediatrician,* " Palermo
- M.S. Epifanio, P. Alfano, P. Audino, V. Genna, S. Di Marco, S. La Grutta, " Genetic diseases and parenting stress: clinical assessment and intervention strategies in the pediatric hospital", Palermo
- V. Fanos "Post partum depression in NICU: mothers' voices", Cagliari
- P. Ferrara "Only" syndrome by proxy or sexual abuse? A case report, Milano
- A. Fontana, G. Giordano, C. Spitaleri, Mangano S., "Epilepsy and cognition: an unsolved problem", Palermo
- B. Gabriele, G. Corsello, "The follow-up of preterm infants. Our experience" Palermo
- F. Giannone "Evaluation of childhood experience of maltreatment and abuse by "childhood experience of care and abuse" (ceca) interview" Palermo
- G. Giordano, " Breast is simply the Best" Palermo
- F. Labate, "the impact of prenatal screening in the first and second trimester of pregnancy," Palermo
- A. La Greca "Assessing functional disability in pediatric populations", Miami
- C. Levorato, M. Roch, "Comprehension of written and spoken text in Down syndrome", Padova
- M. Lo Giudice "Immigrant children", Palermo
- A. Maltese, L. Scifo "Referential communication and disability" Palermo
- R. Militello, "The trauma of sexual abuse and the delicate process of repair: making contacts through drawing and writing", Palermo
- M.R. Moro, *Immigrant families and children*, Paris
- S. Nigito, V. Schimmenti "Vissuti emotivo relazionali dei bambini in affido", Roma, Enna
- M. Oliveri "Repeated sessions of low-frequency repetitive transcranial magnetic stimulation (rTMS) of the right posterior parietal lobe improves communication abilities in children with autism", Palermo
- M.P. Guerra, O.Cruz, G. Perricone, "Coping strategies of parents with chronically disease children: a comparative study between italian and portuguese families", Porto Palermo
- M. Piccione, "The care of children with complex disabilities", Palermo
- G. Rappo, A. Fratantonio, "Dyslexia and borderline intellectual functioning: a case analysis"Palermo
- A. Ruggiero, "Clinical trials with new drugs in children with cancer: what parents (and doctors) hope" Roma
- C. Saladino, F. Cusimano, "Sexuality in disability condition in adolescent"Palermo
- A. Sansavini "The follow-up of preterm infants: assessment of cognitive and communicative linguistic development" Bologna



- V. Schimmenti, M. Pellerone, A. Collura “*Timing perception in children with dyscalculia: an exploration study*” Enna
- M. Spagnuolo Lobb “*The Triadic perspective in early family relationship: a research on conflict*”, Palermo
- A.R. Verardo, Traumatic childhood experiences: the treatment with EMDR *Esperienze traumatiche infantili : il trattamento con EMDR*, Roma
- L. Ziino “*The role of the psychologist within follow up programs for genetic and rare disease*”, Palermo

#### **Saturday, NOVEMBER 26<sup>th</sup>**

#### **Workshop Sessions: “An integrated approach to health management in Pediatric Oncology, Chronic and Surgical disease”**

- R. Barcellona, M.V. Catania, C. Maggio, “*When time of diagnosis is too long!*”, Sciacca (AG), Palermo
- L. Barros “*Training nurses to help children control pain and anxiety during medical procedures*”, Lisbona
- C. Cannizzaro, “*Scientific and operational quality standards in pediatric pharmacotherapy: an opportunity for an efficient stakeholder collaboration*”, Palermo
- M. Cimador, “*How to manage parental fear in pediatric surgical emergency*”, Palermo
- O. Cruz, L. Lima, B. Granja e D. Campos, “*Personal and family characteristics of children with asthma – an exploratory study*”, Porto
- P. Curreri “*Children and anesthesiologists: What makes me a doctor!*”, Sciacca (AG)
- A. D’Amico “*Emotional intelligence as a key research and intervention area in pediatric psychology*”, Palermo
- Fr. De Luca, G. Perricone, A. Privitera, C. Polizzi, F. Rubino “*Self-representation in children suffering from congenital heart disease (chd) and maternal competence*”, Catania
- C. Favara Scacco, S. Scalone, C. Esposito, A. Militello, G. Baggione, “*Psychological intervention in paediatric oncology focused on prevention*”, Catania
- A. Guarino, A. Serantoni, R. Giuliani, R. Lancellotti, “*Parents and adolescent children: the influence of oncological disease on family relationships*”, Roma
- G.P. Koocher “*Optimizing Care for Families Affected by Childhood Cancer*”, Boston
- A. La Greca “*Adherence and social support: two critical issues in diabetes care*”, Miami
- L. Lima, M. Lemos “*What children suffering from cancer think and feel about health and illness*”, Porto
- C. Lo Pinto, L. Pitrolo, E. Giudice, “*Cognitive development in patients with thalassemia major*”, Palermo
- S. Maringhini, A. Carollo “*Adolescent in dialysis : processes, constraints, compromise, resource. A bio-psycho-social point of view*”, Palermo
- U. Pace, “*Fathers role on the onset of disadapting eating behaviors among girl*”, Enna
- M. Pecoraro, F. Lombardo, G. Salzano, Fl. De Luca, “*The role of Pediatric Psychologist in the management and follow-up of diabetic young patients*”, Messina
- D. Rizzo “*The role of communication in paediatric oncology*”, Roma
- L. Salerno, G. Lo Coco, “*Psychological characteristics in children and pre-adolescents with eating and weight disorders*”, Palermo
- N. Salviato C. Dolcemascolo, I. Campisi, R. Staiti, A. Traina “*Travel around prevention and donation”: the role of paediatric psychology on education for primary prevention in evolutive age*”
- C. Salvo, “*Drawing in children with diabetes*”, Palermo
- A. Sansone, M. Giorlando, “*Perioperative management in children*”
- S. Scalone, C. Favara Scacco, S. Marino, “*Post traumatic dynamics and psychological intervention in those healed from paediatric cancer*”, Catania
- T. Scrimali, “*Taking care of the adolescent suffering from eating disorders in the complex optic*”, Enna
- M. Tremolada, S. Bonichini, D. Aloisio, S. Schiavo, M. Pillon, “*Childhood cancer survivors narrate their stories: predictive models of their psycho-social adaptation and perceived quality of life*”, Padova

## THE SCIENTIFIC COMMITTEE



### **Scientific Chief :**

- Prof.ssa G. Perricone, Psicologia dello Sviluppo e dell'Educazione, Facoltà di Scienze della Formazione, Università degli Studi di Palermo; Coordinatrice dell' Unità di Ricerca in "Psicologia Pediatrica", Dipartimento di Psicologia, Università degli Studi di Palermo

### **Scientific Committee :**

- Prof. I. Barberi, Ordinario di Pediatria Generale e Specialistica, Direttore U.O. Complessa Patologia e TIN , Azienda Ospedaliera Universitaria, Policlinico "G. Martino", Università degli Studi di Messina
- Dr. A. Carollo, Unità di Ricerca in "Psicologia Pediatrica", Dipartimento di Psicologia, Università degli Studi di Palermo
- Dr. M. Ciccìa, Azienda Ospedaliera "Ospedali Riuniti Villa Sofia – Cervello" , Palermo
- Prof . G. Corsello, Vicepresidente Società Italiana di Pediatria; Ordinario di Pediatria, Facoltà di Medicina e Chirurgia Università degli Studi di Palermo; Direttore Dipartimento Universitario Materno Infantile, Policlinico Universitario "P. Giaccone", Università degli Studi di Palermo
- Prof. F. De Luca, Direttore U.O. Cardiologia Pediatrica, Ospedale "Ferrarotto", Azienda Ospedaliero-Universitaria Policlinico - Vittorio Emanuele, Catania
- Dr. A. Fischer, Presidente Regionale "Società Italiana di Pediatria- Sezione Sicilia"; Direttore U.O. Pediatria Presidio Ospedaliero "Santa Marta e Santa Venera", Acireale (CT); Presidente "Paidos", Catania
- Dr. A. Gulino, Pediatra di Famiglia, "Paidos", Catania
- Prof. G. Lavanco, Ordinario Psicologia di Comunità, Facoltà di Scienze della Formazione, Università degli Studi di Palermo
- Dr. A. Lo Cascio, Pediatra, Presidente "Di.Stu.Ri", "F.I.M.P.- Palermo" .
- Dr. M.R. Morales, Assegnista di Ricerca, Università degli Studi di Palermo
- Prof. G. Perricone, Associato di Psicologia dello Sviluppo e dell'Educazione, Facoltà di Scienze della Formazione, Università degli Studi di Palermo; Coordinatrice dell' Unità di Ricerca in "Psicologia Pediatrica", Dipartimento di Psicologia, Università degli Studi di Palermo
- Dr. C. Polizzi, Ricercatore, Università degli Studi di Palermo
- Dr. A. Rizzo, Direttore U.O. Neonatologia, Presidio Ospedaliero "G. F. Ingrassia", A.S.P. Palermo
- Dr. M. Santoro, Psicologo, A.S.P. , Palermo
- Dr. G. Sullioti, Direttore Dipartimento Materno- Infantile, Direttore U.O. Neonatologia con UTIN, Azienda ospedaliera Ospedale Riuniti, " Villa Sofia- Cervello", Palermo



## **CONFERENCE PLACE**



## **HOW TO ARRIVE**

### **From the airport Falcone Borsellino**

- Leave the airport and take the A29 Palermo-Mazara del Vallo motorway heading toward “Palermo”
- At the end of the motorway, go straight on Viale Regione Siciliana (see directions for “Palermo-Catania/Messina, heading toward Catania)
- Take the Corso Calatafimi exit on your right to the city Centre
- Go straight on until you reach Piazza Indipendenza
- Drive around Piazza Indipendenza heading toward Corso Vittorio Emanuele
- Go straight on until you reach the last side street on your right, turn on the side street to enter Piazza Marina
- The Congress is at Chiaramonte Steri Palace, seat of the Rectorate, on Piazza Marina 61.

### **From Trapani**

- Drive along the A29 Palermo-Mazara del Vallo motorway heading toward Palermo
- At the end of the motorway, go straight on Viale Regione Siciliana (see directions for “Palermo-Catania/Messina, heading toward Catania)
- Take the Corso Calatafimi exit on your right heading toward the city Centre
- Go straight on until you reach Piazza Indipendenza
- Drive around Piazza Indipendenza heading toward Corso Vittorio Emanuele
- Go straight on until you reach the last side street on your right, turn on the side street to enter Piazza Marina
- The Congress is at Chiaramonte Steri Palace, seat of the Rectorate, on Piazza Marina 61.

### **From Catania/From Messina**

- Drive along the A19 Palermo-Catania motorway heading toward Palermo/ Drive along the A20 Palermo-Messina motorway heading toward Palermo
- At the end of the motorway, go straight on Viale Regione Siciliana (see directions for “Palermo-Catania/Messina, heading toward Palermo)
- Take the Corso Calatafimi exit on your right heading toward the city Centre
- Go straight on until you reach Piazza Indipendenza
- Drive around Piazza Indipendenza heading toward Corso Vittorio Emanuele
- Go straight on until you reach the last side street on your right, turn on the side street to enter Piazza Marina
- The Congress is at Chiaramonte Steri Palace, seat of the Rectorate, on Piazza Marina 61.

## *List of Hotels and B&B*



**Grand Hotel Piazza Borsa\*\*\*\***  
Via dei Cartari, n°18  
Tel. : 091320075

**Hotel Porta Felice \*\*\*\***  
Via Butera, 45  
091 617 5678  
[www.hotelportafelice.it](http://www.hotelportafelice.it)

**Hotel del Centro \*\*\***  
Via Roma, 72  
Tel. 0916170376  
[www.hoteldelcentro.it](http://www.hoteldelcentro.it)

**Hotel Moderno \*\***  
Via Roma, n° 276  
Tel/ Fax 091588683  
[www.hotelmodernopa.com](http://www.hotelmodernopa.com)

**Hotel Italia \*\***  
Via Roma, n° 62  
Tel. : 0916169320  
[www.hotelspalermo.it](http://www.hotelspalermo.it)

**B&B San Francesco**  
Via Merlo, n°30  
091 8888391  
[www.sanfrancescopalermo.it](http://www.sanfrancescopalermo.it)

**B&B Art Lincoln**  
via Lincoln, 161  
Cell. 3285445482  
[www.bedandbreakfastpalermoart.com/](http://www.bedandbreakfastpalermoart.com/)

**B&B Cult'n'Sea**  
Via San Sebastiano n° 13  
Tel. : 0915081547; Cell. : 3204858750 – 3203370471  
[www.cultnsea.it](http://www.cultnsea.it)

**B&B Z.C.**  
Via Gorizia, n°8  
Tel. : 0919823793; Cell.: 3294159236  
[www.bed-and-breakfast-sicilia.it](http://www.bed-and-breakfast-sicilia.it)

**Hotel Quinto Canto \*\*\*\***  
Corso Vittorio Emanuele 310  
Tel. +39.091.584913  
[www.quintocantohotel.com/it/](http://www.quintocantohotel.com/it/)

**Hotel Rainbow \*\*\***  
Piazzale Ungheria, 84  
Tel. 091582867 Cell. 3464738988  
[www.hotelrainbow.it](http://www.hotelrainbow.it)

**Hotel Alessandra \*\***  
Via Divisi n° 99- piano 2°  
Tel. : 0916173958/ 0916174325  
[www.hotel-alessandra.it](http://www.hotel-alessandra.it)

**Hotel Sicilia \*\***  
Via Divisi, n°99  
Tel. : 0916168460  
[www.hotelsiciliapalermo.it](http://www.hotelsiciliapalermo.it)

**B&B Allakala**  
Corso Vittorio Emanuele, 71  
Tel. 0917434763 Cell. 3298038925  
[www.allakala.it](http://www.allakala.it)

**B&B PALIKE;**  
Via Emerico Amari, 140  
Tel. 091 586795 Cell: 337 866777  
Cell: 388 1655777

**B&B Guest House**  
Ruggero VII  
via Cavour, 32  
Tel. 091581585 Cell. 340 5547224  
[www.guesthouseruggiero.it/](http://www.guesthouseruggiero.it/)

**B&B Castiglia**  
Via Gorizia, n° 8  
Tel. : 0916172341; Cell. : 3804719677  
[www.bbcastiglia.it](http://www.bbcastiglia.it)

**Pensione Palazzo Savona**  
Via Schioppettieri, n° 8  
Tel. : 0916114731  
[www.palazzosavona.com](http://www.palazzosavona.com)



**Organizing secretariat :**

Coordinator Dott. A. Carollo

- Dott.ssa A. Bono
- Dott.ssa A. Faucetta
- Dott.ssa F. Maniscalco

**Administrative secretariat:** Biomedica S.R.L.

**Press office:**

- Dott.ssa P. Bosi

**Facilitators Team:**

- Dott.ssa A. La Genga
- Dott.ssa G. Maniscalco
- Dott.ssa S. Marotta
- Dott.ssa C. Mascolino
- Sig.ra S. Modica

**Translator:**

- Prof. G. Anzalone
- Prof. N. Calabrese

**Support for the Translation:**

- Dott.ssa M. Alesi
- Prof.ssa S. Bonichini
- Dott. A. Carollo
- Prof. M. Cimador
- Dott.ssa A. D'Amico
- Dott.ssa M.I. Habicht
- Dott.ssa M. Spagnuolo Lobb

For further information, please contact:

Telephone number : 091 – 595191 / 091-598678 / 091-23897740 / 3462413807

E-mail address for information : [psicologiapediatrica@unipa.it](mailto:psicologiapediatrica@unipa.it)

**For registration to Conference in:** [www.biomedica.net](http://www.biomedica.net)

To look Italian version of draft program: [www.psicologia.unipa.it](http://www.psicologia.unipa.it)



### How to register :

Please, fill the registration form in the Biomedica website : [www.biomedica.net](http://www.biomedica.net) .

We invite you to keep the bank transfer receipt which should be showed for registration purposes (25<sup>th</sup> November 2011) .

Delegates attending the Conference have a unique opportunity to follow an intensive program of professional development and continuing medical education (C.M.E. ) .

#### The C.M.E for psychologists, pediatricians and pediatric nurses:

- November 25<sup>th</sup> , workshop session: 4 C.M.E.
- November 26<sup>th</sup> , workshop session: 3 C.M.E.

#### Registration fees :

- 50,00 € within November 5<sup>th</sup> , 2011
- 100,00 € after November 5<sup>th</sup> , 2011
- 120,00 € if you subscribe on November 25<sup>th</sup> , 2011
- For university students, scholars, PhD participation to the congress is free \*

#### Registration is possible starting from October 17<sup>th</sup>, 2011

To take advantage of any reductions on fees we invite you to book before November 5<sup>th</sup> , 2011 .

\*Up to a specific number established by the organization.

#### Participation to the social dinner :

Participation is charged to the participant (31,00 Euro), with payment made by cash, at conference place on November 25<sup>th</sup> , 2011.

#### Registration fees includes:

- Attendance to all scientific and workshop sessions
- C.M.E. Credits
- Certificate of attendance
- Congress kit with scientific material :
  - The Book : “Pensarsi Psicologo Pediatrico”, written by C. Polizzi , Editor Franco Angeli, 2011.
  - CD- ROM with studies and researches by “Pediatric Psychology Research Unit”, Department of Psychology, University of Palermo.
  - CD- ROM with abstracts.
- (Only for pediatricians) The participation to post-conference workshops (January – February 2012) for a total of 24 C.M.E. credits

# Required Sponsor and Scientific Patronage



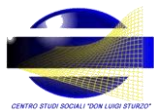
UNIVERSITÀ DEGLI STUDI DI PALERMO



Assessorato alla famiglia, alle politiche sociali e al lavoro - Regione Sicilia



Associazione Siciliana per la lotta contro le Leucemie e i Tumori dell'infanzia - Onlus "Liberi di Crescere"



Presidente DI STU.RI: Dr.ssa Antonina Lo Cascio - email: netticascio@aliceposta.it



UNIVERSITÀ DEGLI STUDI DI PALERMO  
Centro Interdipartimentale di Ricerche Educative (CIRE)

